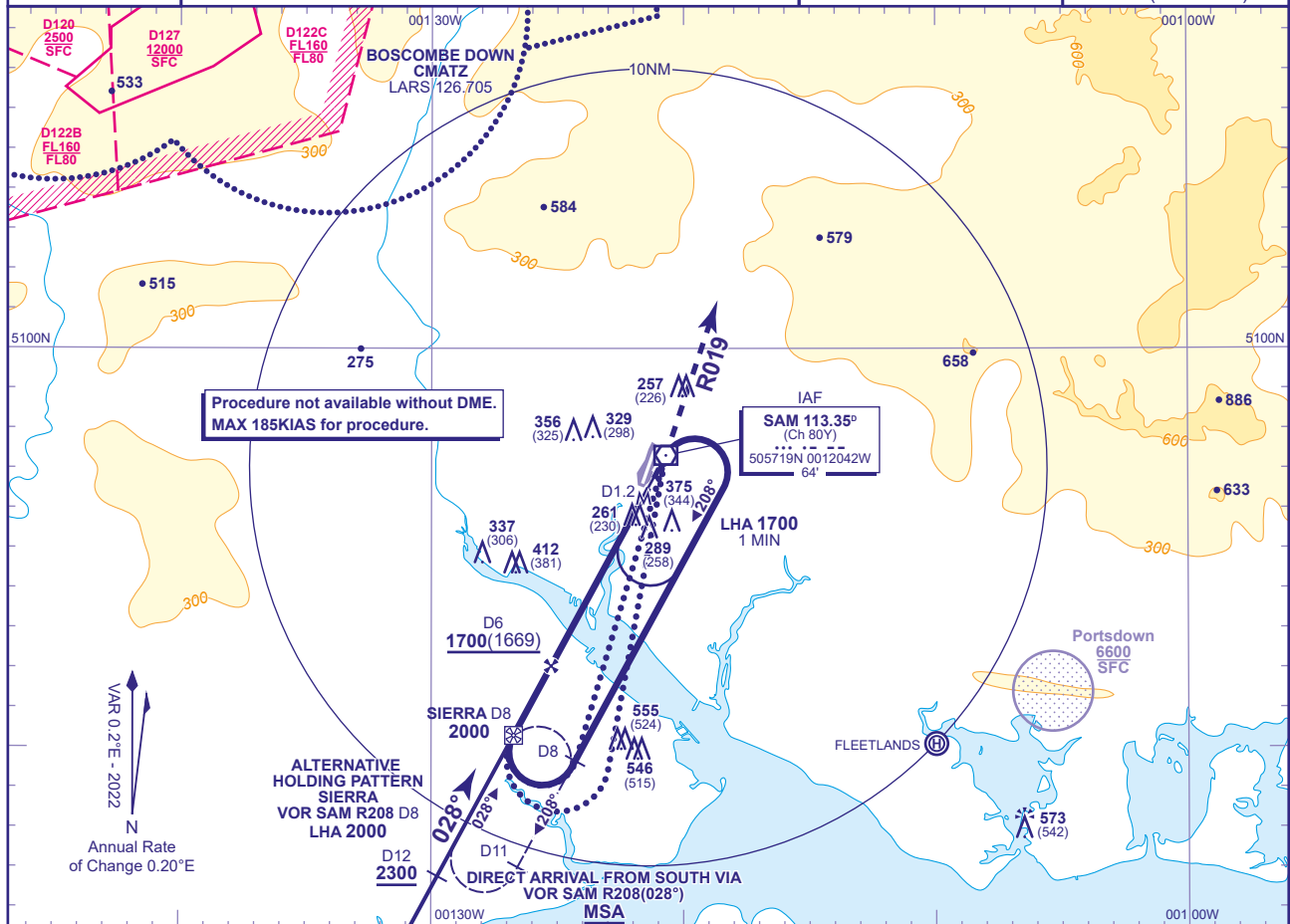


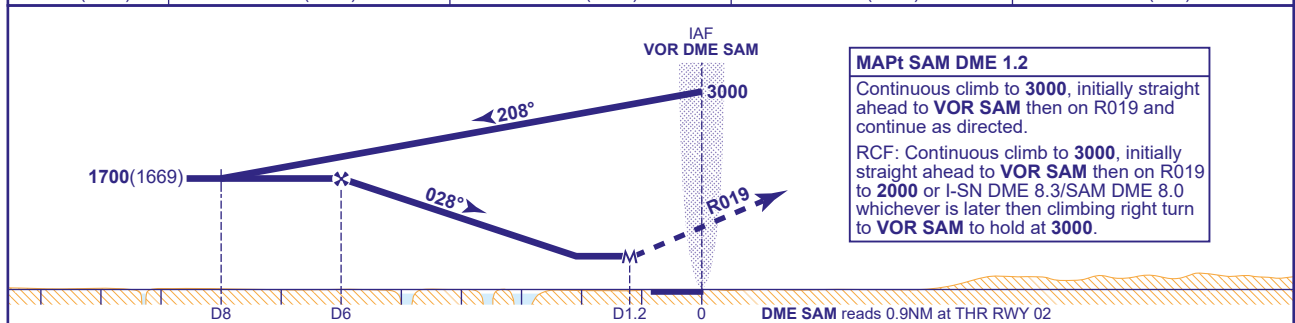
APP	120.230	SOLENT RADAR
	122.730	SOUTHAMPTON RADAR
TWR	118.205	SOUTHAMPTON TOWER
ATIS	130.880	SOUTHAMPTON INFORMATION

AD ELEVATION	44
THR ELEVATION	31
OBSTACLE ELEVATION	648 AMSL (617) (ABOVE THR)
BEARINGS ARE MAGNETIC	

TRANSITION ALTITUDE
6000 (see note 3)

RECOMMENDED PROFILE Gradient 5.24%, 318FT/NM

DME SAM	6	5	4	3
ALT(HGT)	1700(1669)	1380(1349)	1060(1029)	740(709)



Aircraft Category		A	B	C		Rate of descent	G/S KT	160	140	120	100	80
OCA (OCH)	Procedure	570(539)	570(539)	570(539)			FT/MIN	850	740	640	530	420
VM(C)OCA (OCH AAL)	Total Area	680(636)	700(656)	890(846)								

ALTERNATIVE BASE TURN PROCEDURE

Arrival to VOR DME SAM (IAF) at **3000** fly outbound on R197 (CAT A,B); R191 (CAT C) descending to **1700(1669)**. At SAM DME D8 base turn right onto extended FAT. When established continue as for main procedure.

ALTERNATIVE PROCEDURE FROM HOLDING PATTERN SIERRA

From holding fix SIERRA inbound (VOR SAM R208 DME 8) at **2000**, descend to cross FAF (SAM DME D6) not below **1700(1669)**, then continue as for main procedure.

NOTE 1 FAT is offset 10° from RWY C/L and intercepts the extended RWY C/L 1.0NM before the THR.

2 Aircraft will normally be required to hold not lower than **2000**.

3 Outside the Solent CTA notified hours of operation the Transition Altitude is **3000**.

CHANGE (12/25): BOSCOMBE FREQUENCY.